

B. Loss of Load Duration Curves for all Scenarios and Physical Disruptions

Appendix B. Disruption Comparison Charts

Climate Change Phase II Resource Set

Chart 1 - CLCPA Case - Summer: DE Resource Generation Duration Curves for Base, Temperature Wave, and Wind Lull Scenarios

Chart 2 - CLCPA Case - Summer: DE Resource Generation Duration Curves for Storm and Drought Scenarios

Chart 3 - CLCPA Case - Summer: LOLO Duration Curves for all Scenarios

Chart 4 - CLCPA Case - Winter: DE Resource Generation Duration Curves for Base, Temperature Wave, and Wind Lull Scenarios

Chart 5 - CLCPA Case - Winter: DE Resource Generation Duration Curves for Storm and Icing Scenarios

Chart 6 - CLCPA Case - Winter: LOLO Duration Curves for all Scenarios

Chart 7 - Reference Case - Summer: DE Resource Generation Duration Curves for Base, Temperature Wave, and Wind Lull Scenarios

Chart 8 - Reference Case - Summer: DE Resource Generation Duration Curves for Storm and Drought Scenarios

Chart 9 - Reference Case - Summer: LOLO Duration Curves for all Scenarios

Chart 10 - Reference Case - Winter: DE Resource Generation Duration Curves for Base, Temperature Wave, and Wind Lull Scenarios

Chart 11 - Reference Case - Winter: DE Resource Generation Duration Curves for Storm and Icing Scenarios

Chart 12 - Reference Case - Winter: LOLO Duration Curves for all Scenarios

Grid in Transition Resource Set

Chart 13 - CLCPA Case - Summer: DE Resource Generation Duration Curves for Base, Temperature Wave, and Wind Lull Scenarios

Chart 14 - CLCPA Case - Summer: DE Resource Generation Duration Curves for Storm and Drought Scenarios

Chart 15 - CLCPA Case - Summer: LOLO Duration Curves for all Scenarios

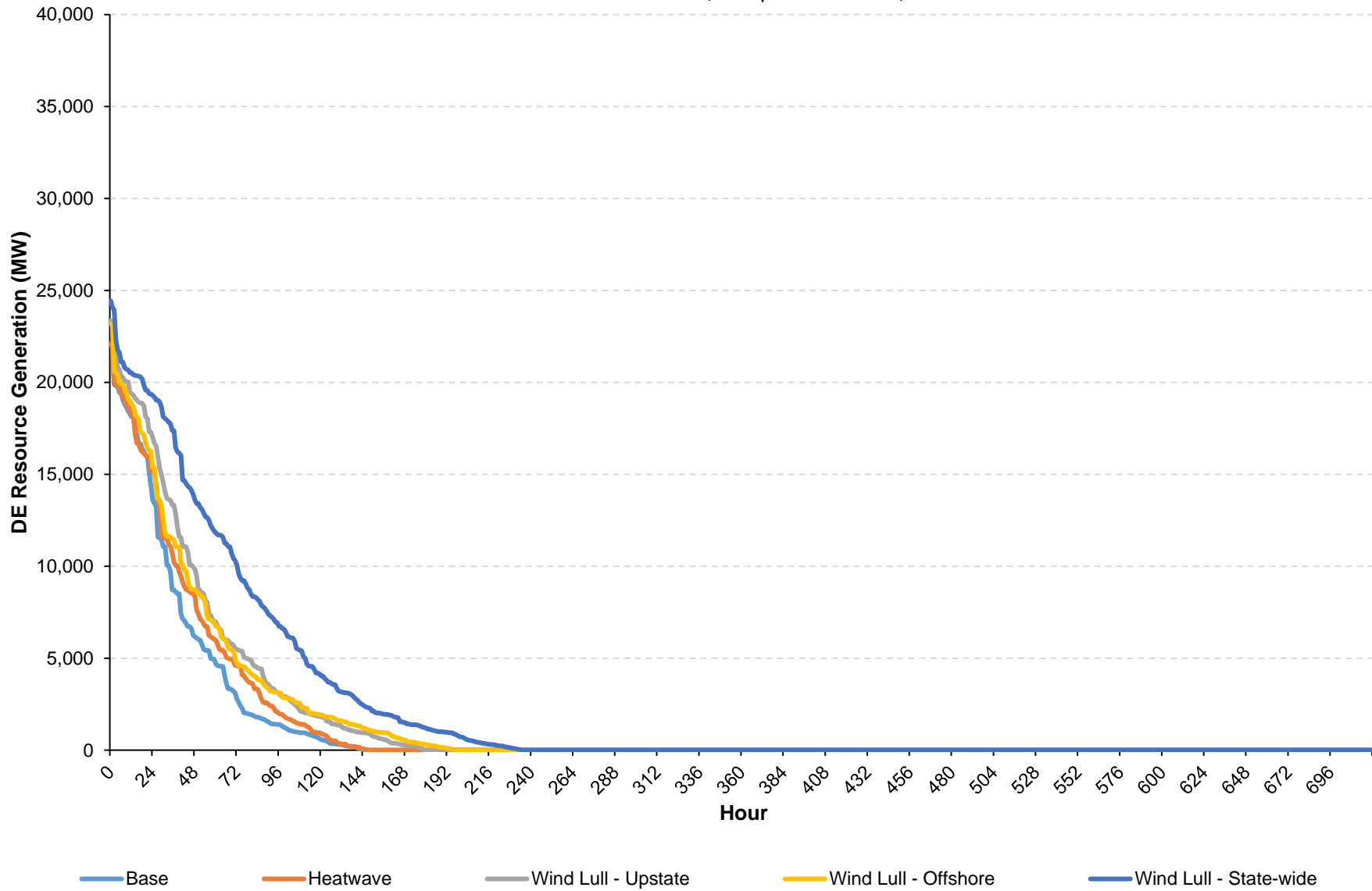
Chart 16 - CLCPA Case - Winter: DE Resource Generation Duration Curves for Base, Temperature Wave, and Wind Lull Scenarios

Chart 17 - CLCPA Case - Winter: DE Resource Generation Duration Curves for Storm and Icing Scenarios

Chart 18 - CLCPA Case - Winter: LOLO Duration Curves for all Scenarios

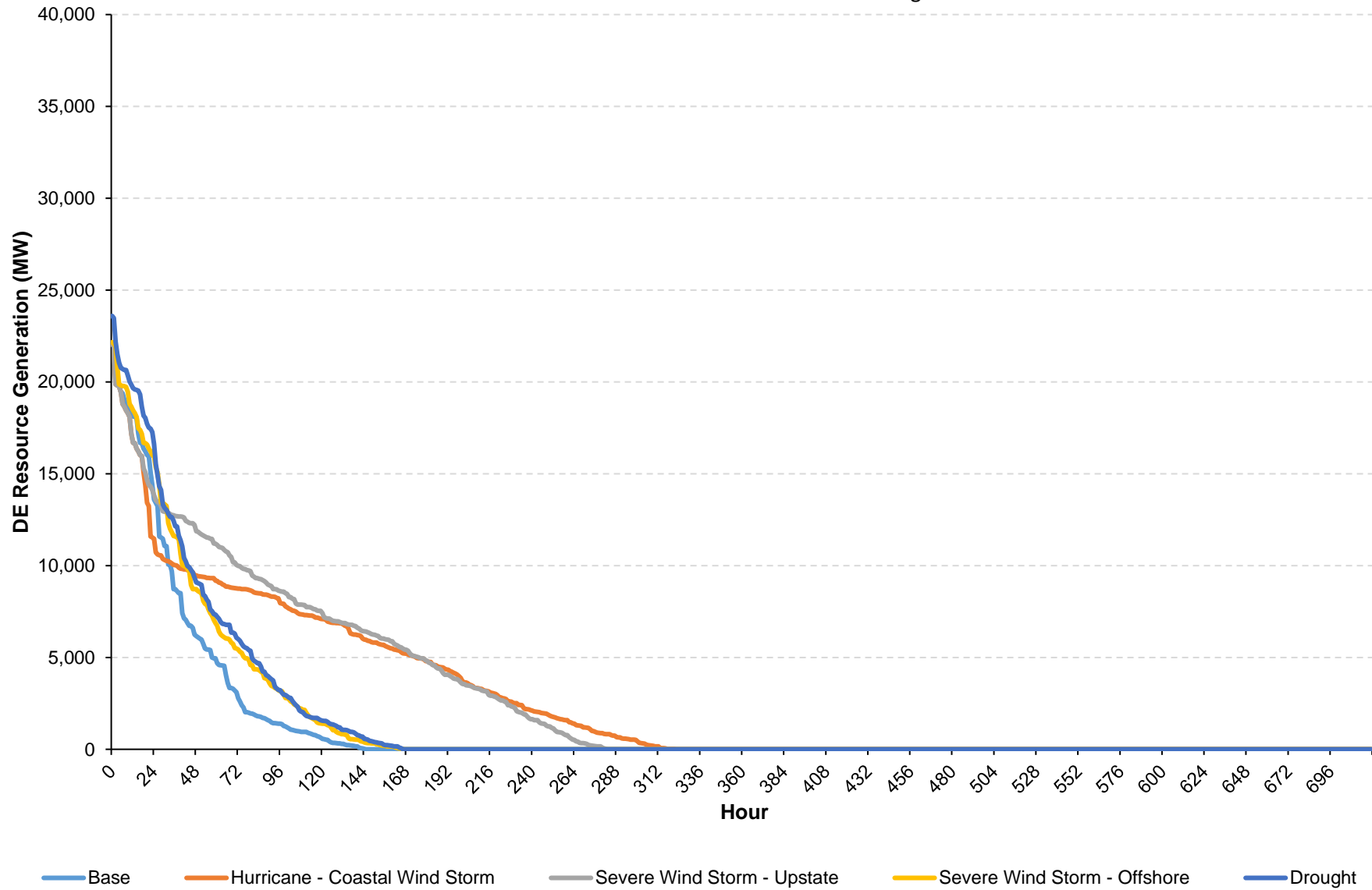
NYCA DE Resource Generation (MW)

CLCPA Case - Summer - CCP2 Resource Set: Base, Temperature Wave, and Wind Lull Scenarios



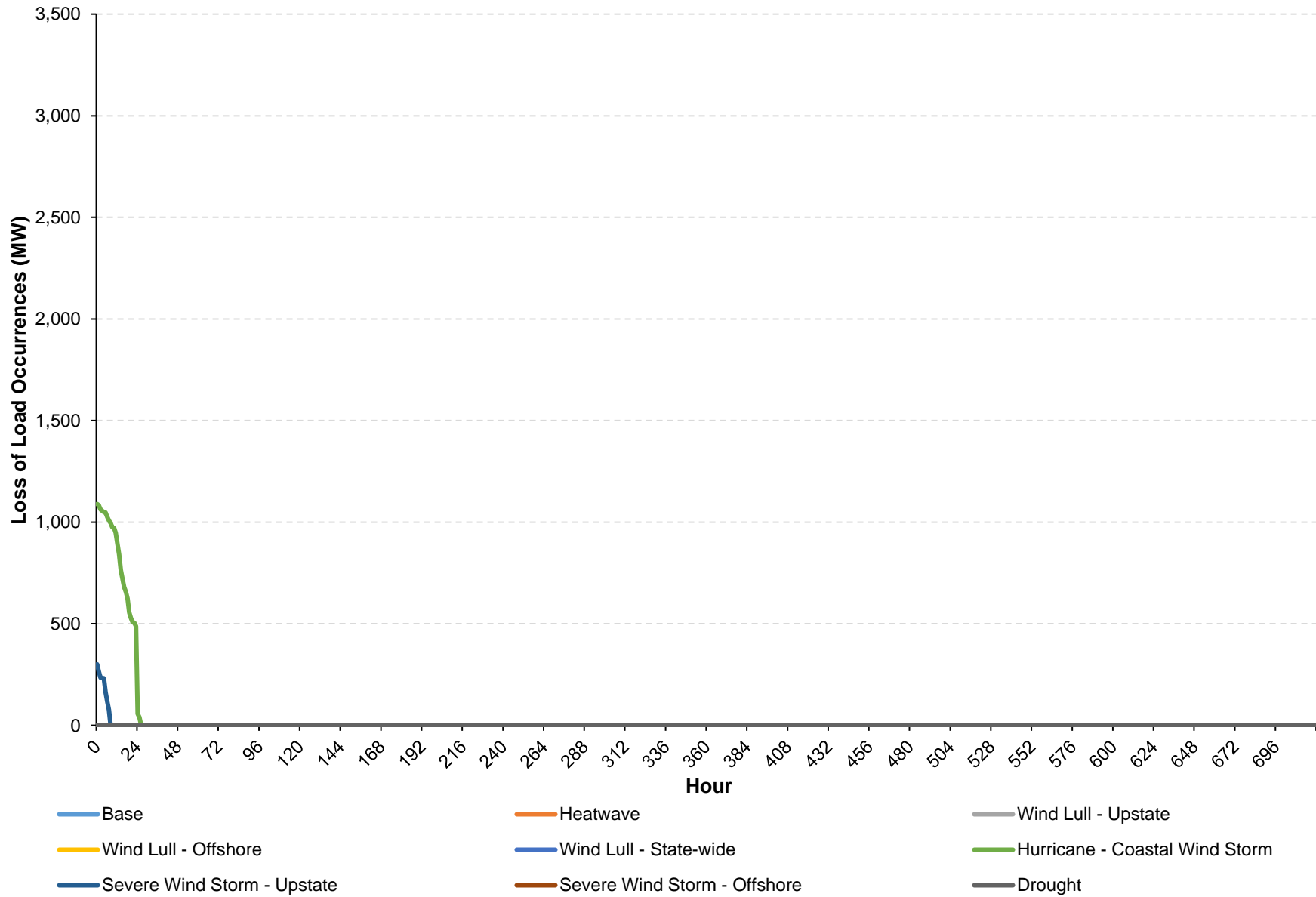
NYCA DE Resource Generation (MW)

CLCPA Case - Summer - CCP2 Resource Set: Storm and Drought Scenarios



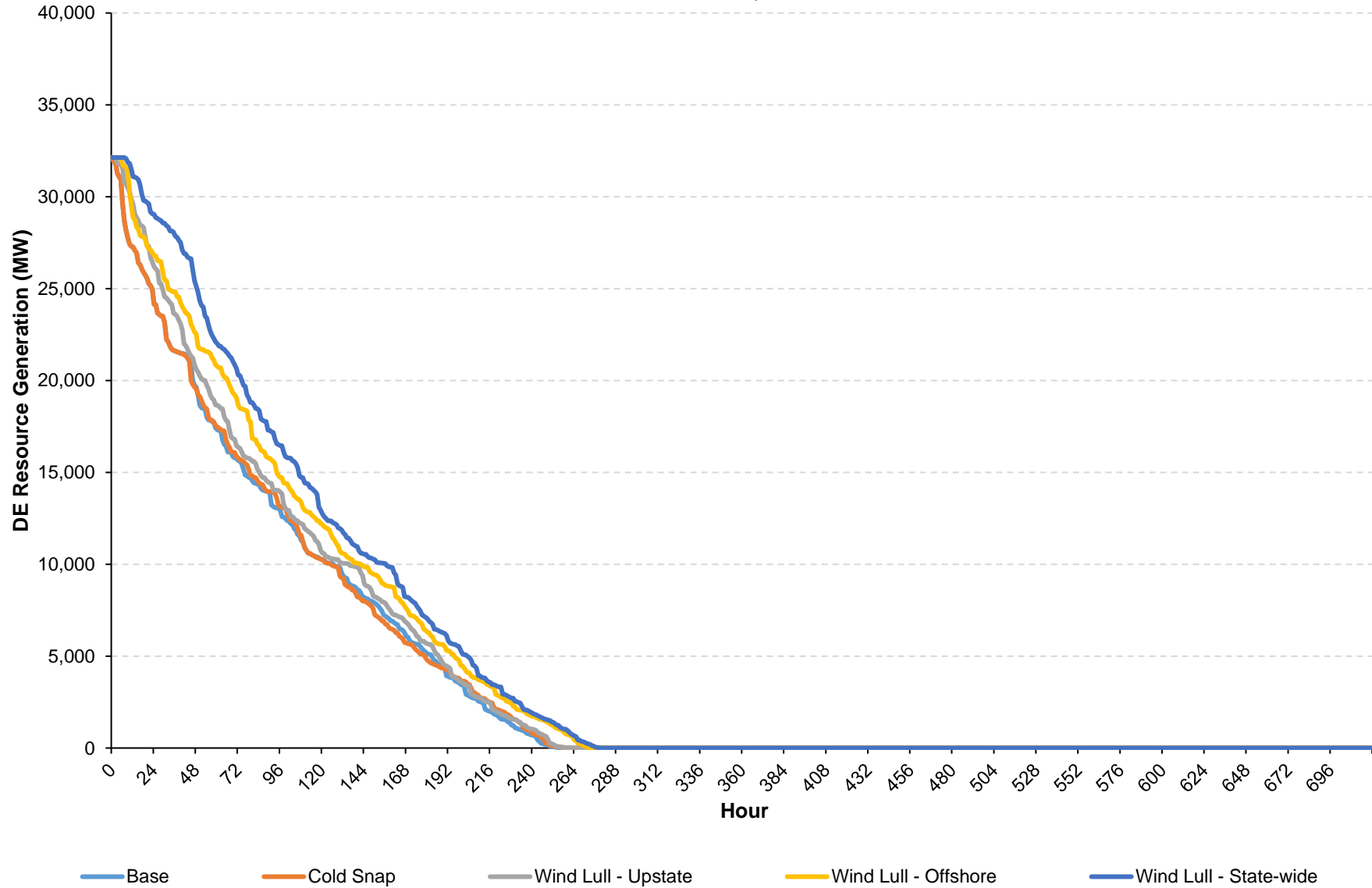
NYCA Loss of Load Occurrences (MW)

CLCPA Case - Summer - CCP2 Resource Set: All Scenarios



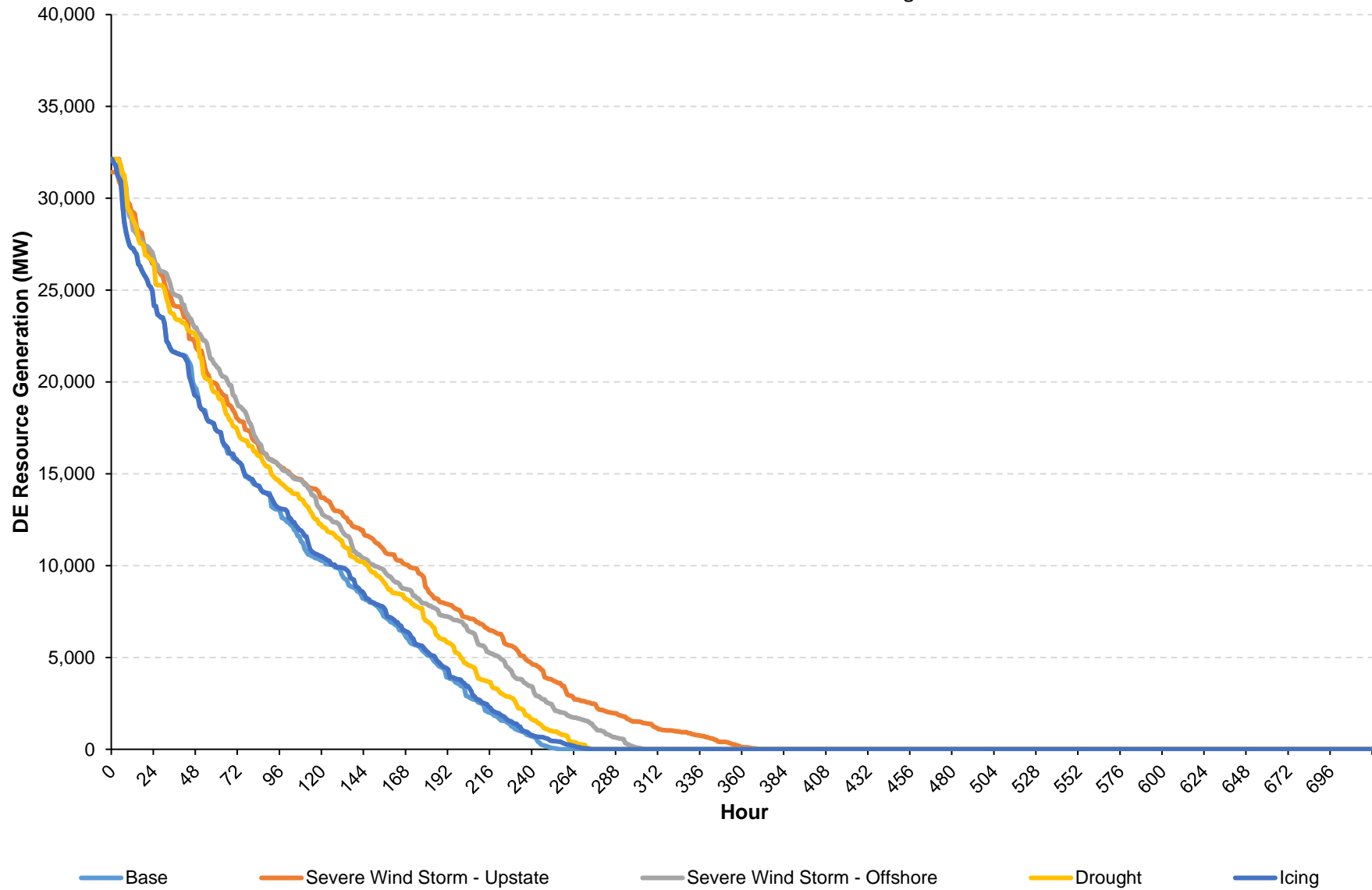
NYCA DE Resource Generation (MW)

CLCPA Case - Winter - CCP2 Resource Set: Base, Temperature Wave, and Wind Lull Scenarios



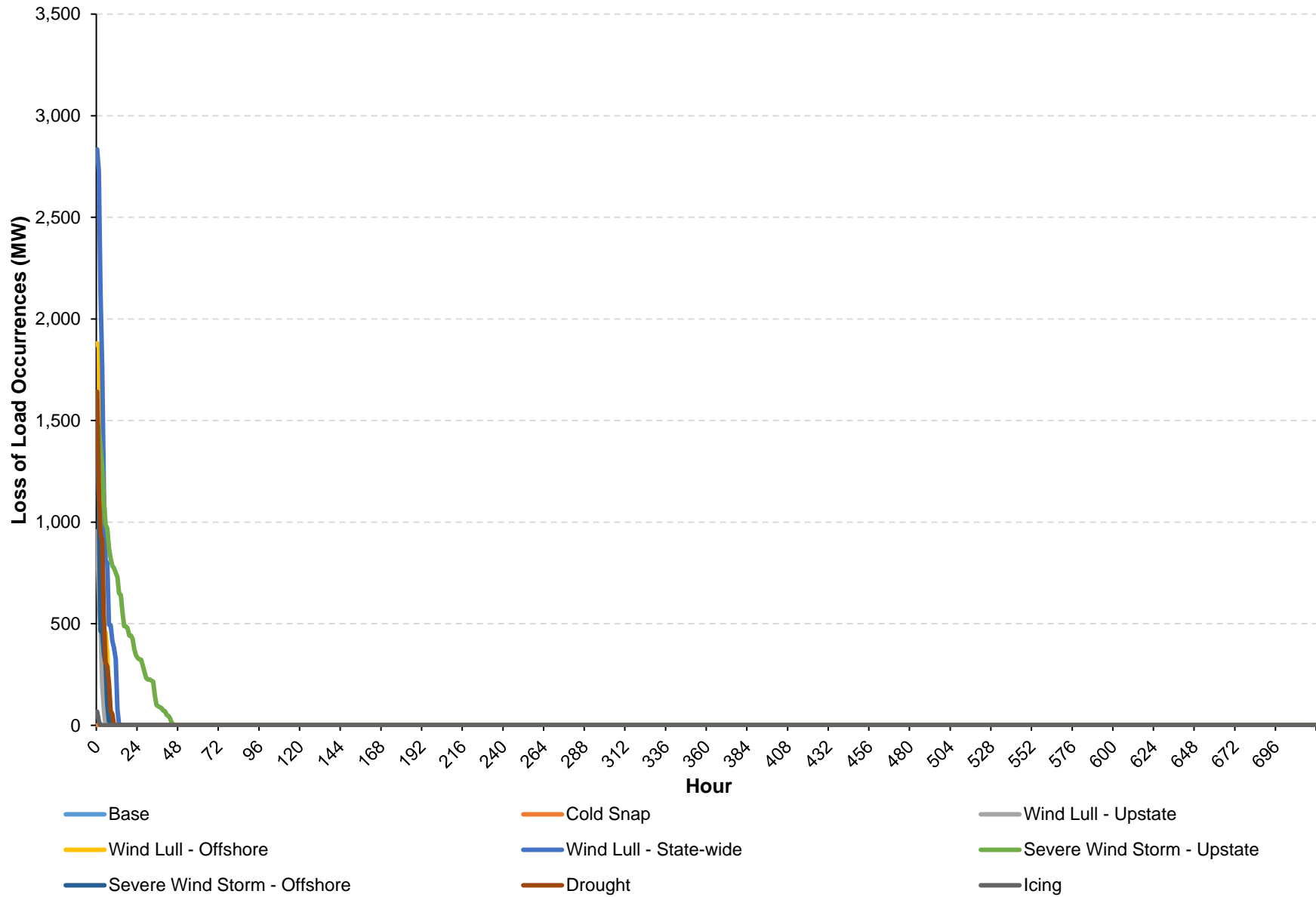
NYCA DE Resource Generation (MW)

CLCPA Case - Winter - CCP2 Resource Set: Storm and Drought Scenarios



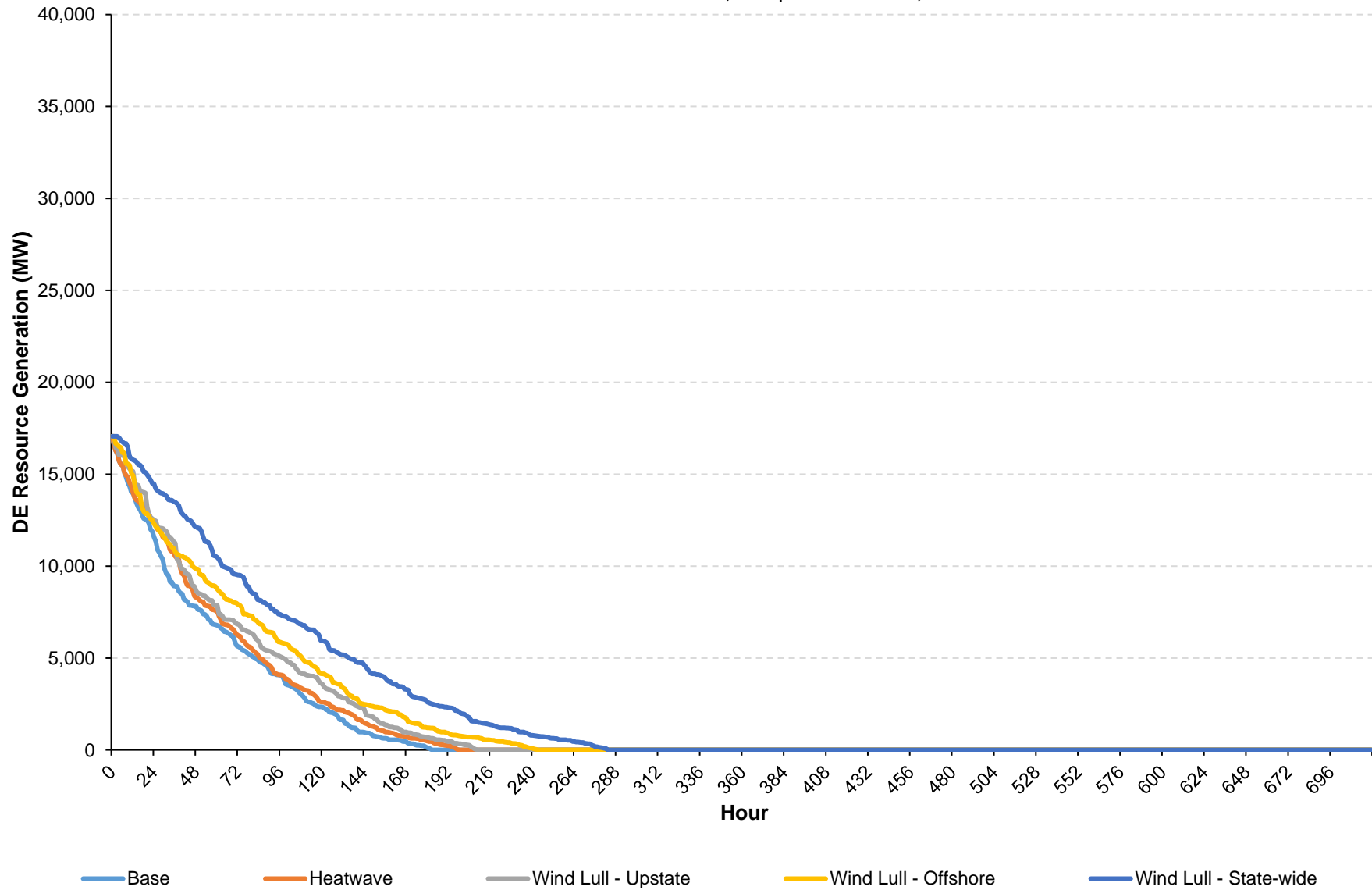
NYCA Loss of Load Occurrences (MW)

CLCPA Case - Winter - CCP2 Resource Set: All Scenarios



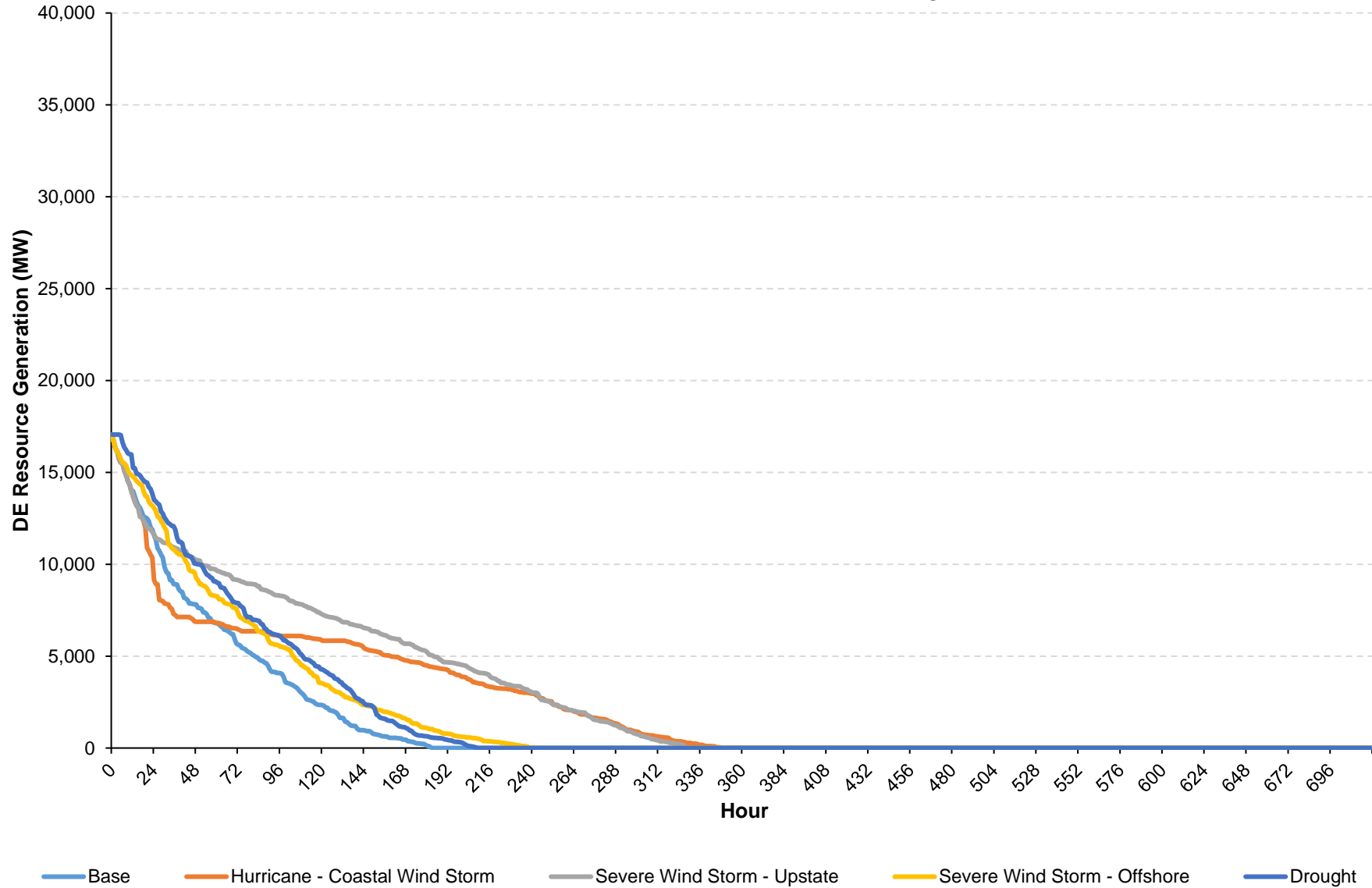
NYCA DE Resource Generation (MW)

Reference Case - Summer - CCP2 Resource Set: Base, Temperature Wave, and Wind Lull Scenarios



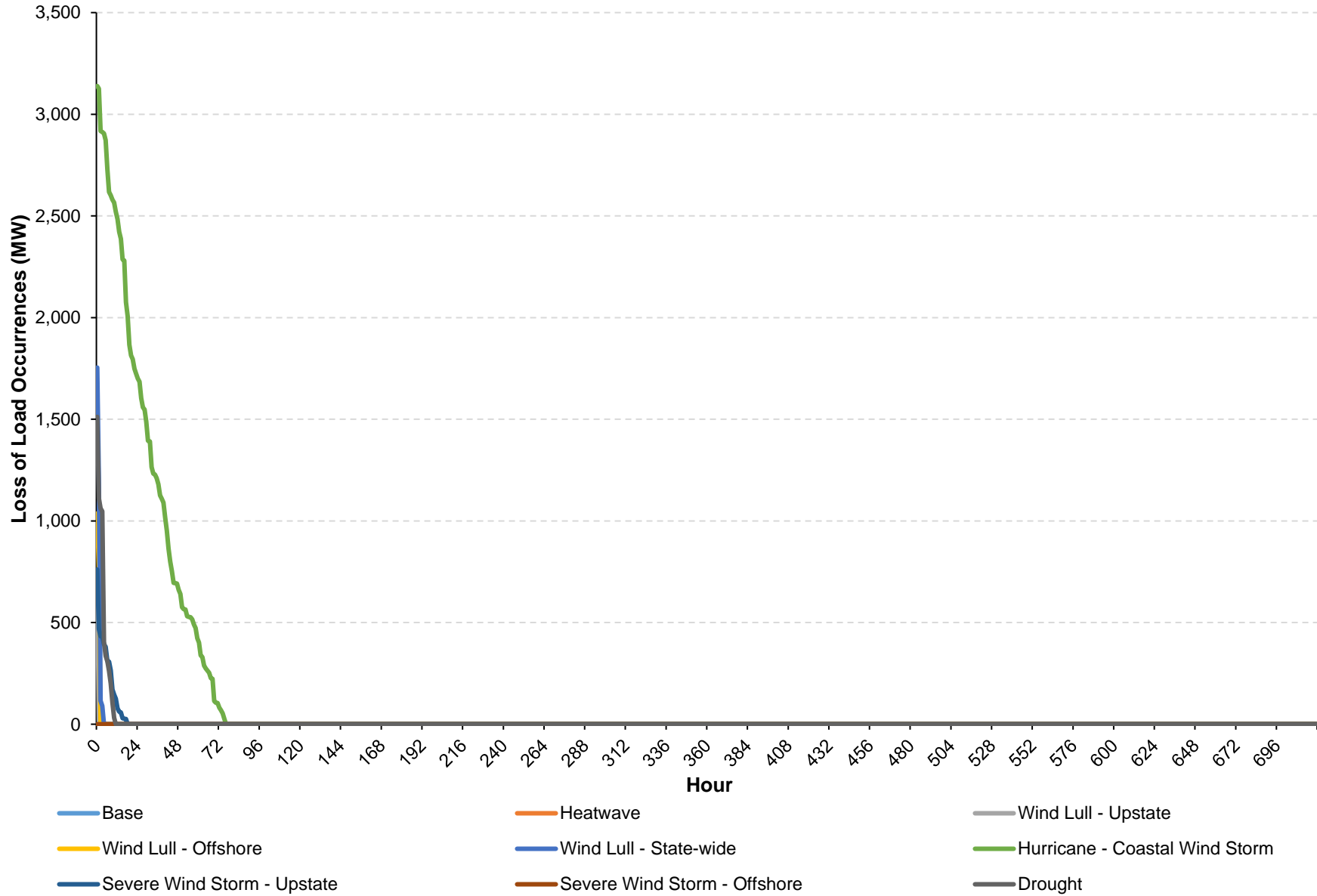
NYCA DE Resource Generation (MW)

Reference Case - Summer - CCP2 Resource Set: Storm and Drought Scenarios



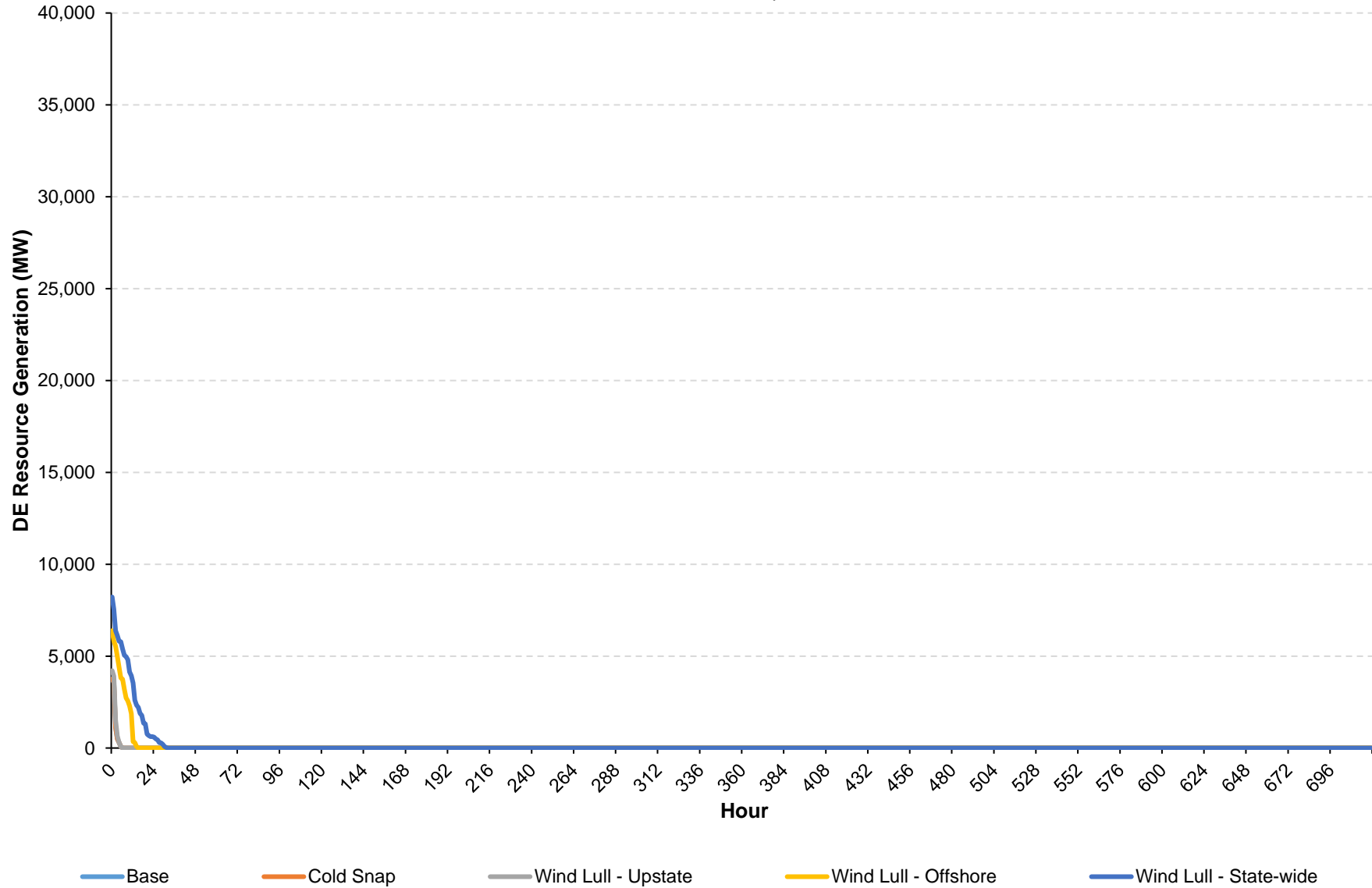
NYCA Loss of Load Occurrences (MW)

Reference Case - Summer - CCP2 Resource Set: All Scenarios



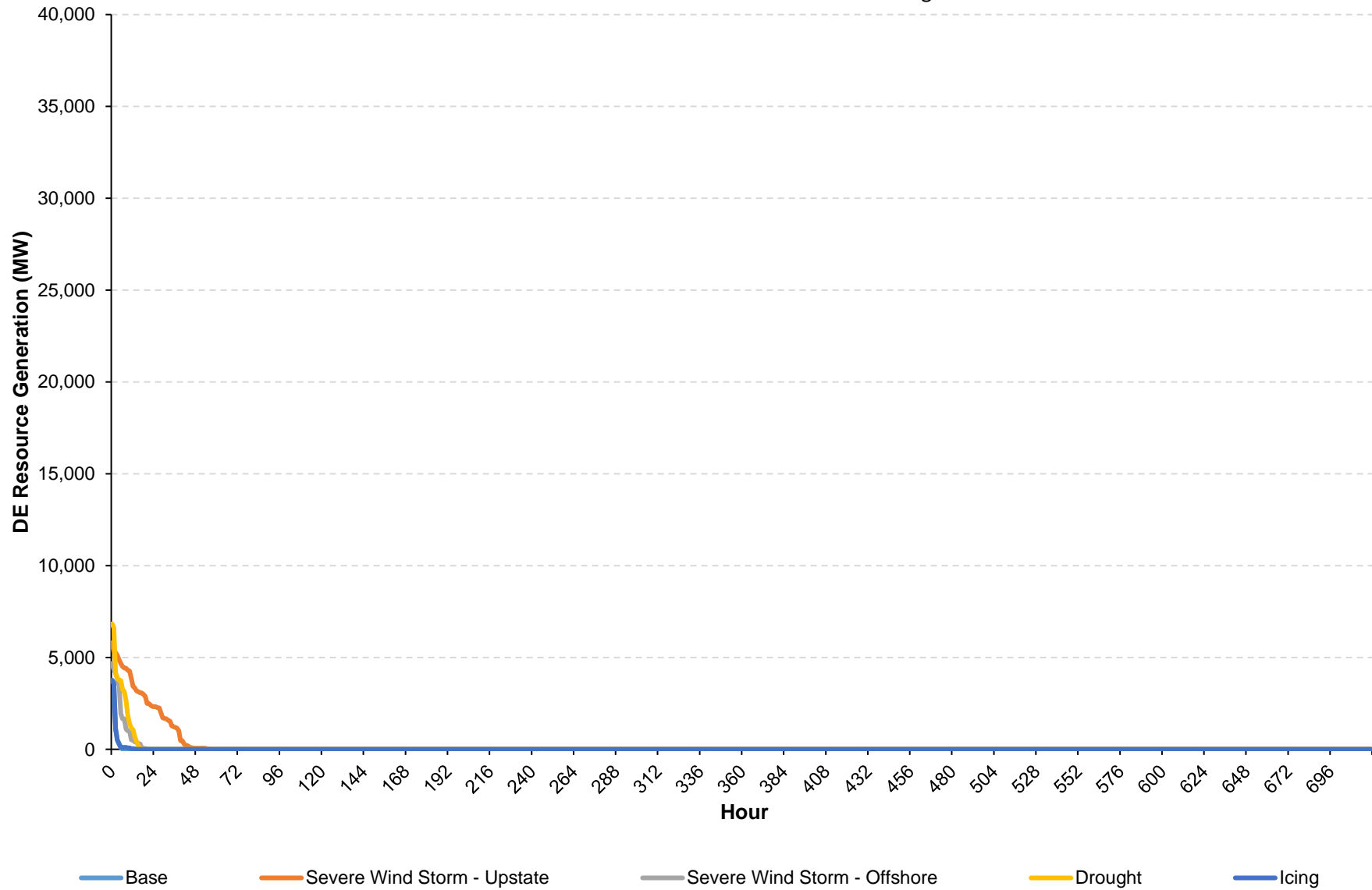
NYCA DE Resource Generation (MW)

Reference Case - Winter - CCP2 Resource Set: Base, Temperature Wave, and Wind Lull Scenarios



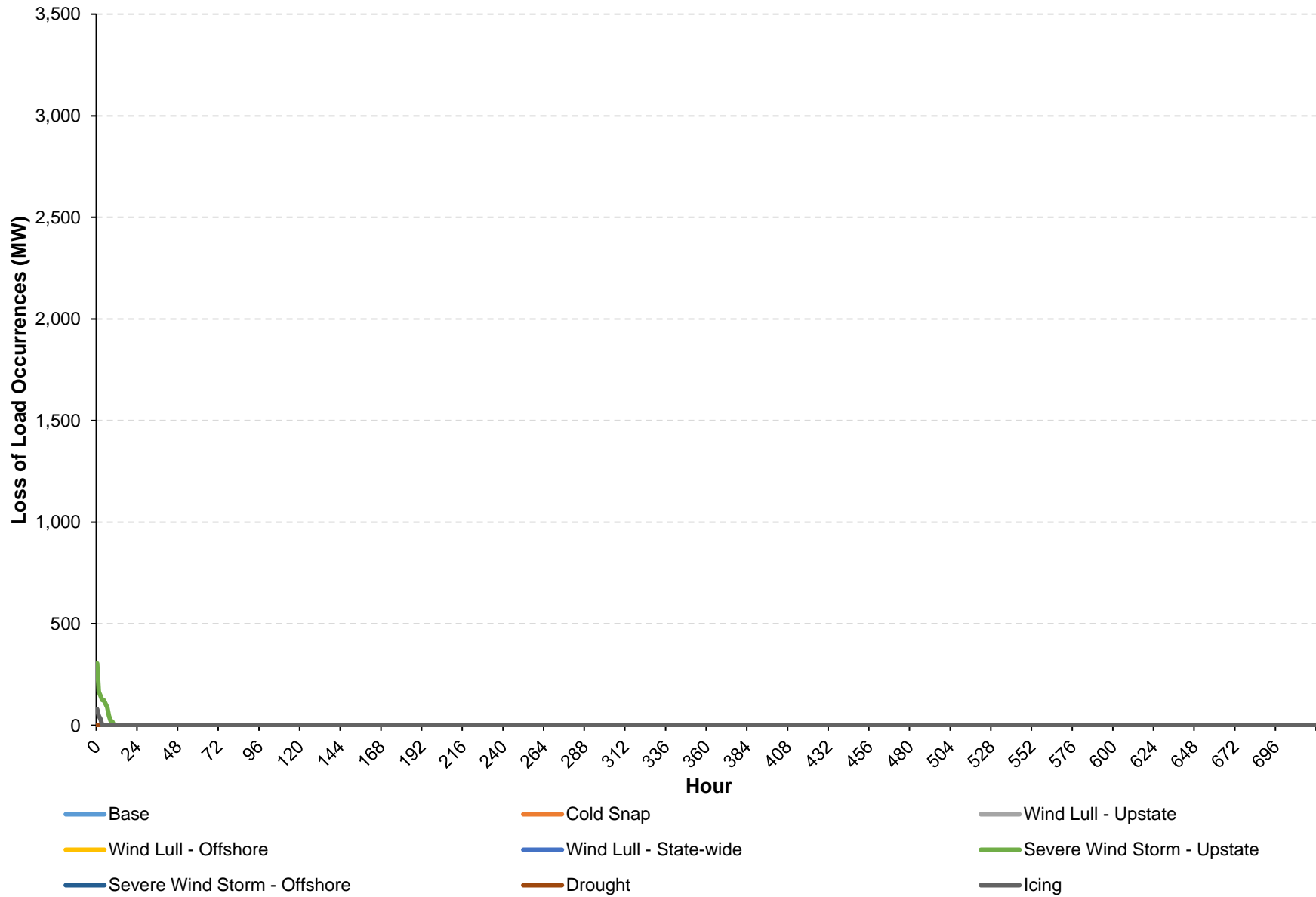
NYCA DE Resource Generation (MW)

Reference Case - Winter - CCP2 Resource Set: Storm and Drought Scenarios



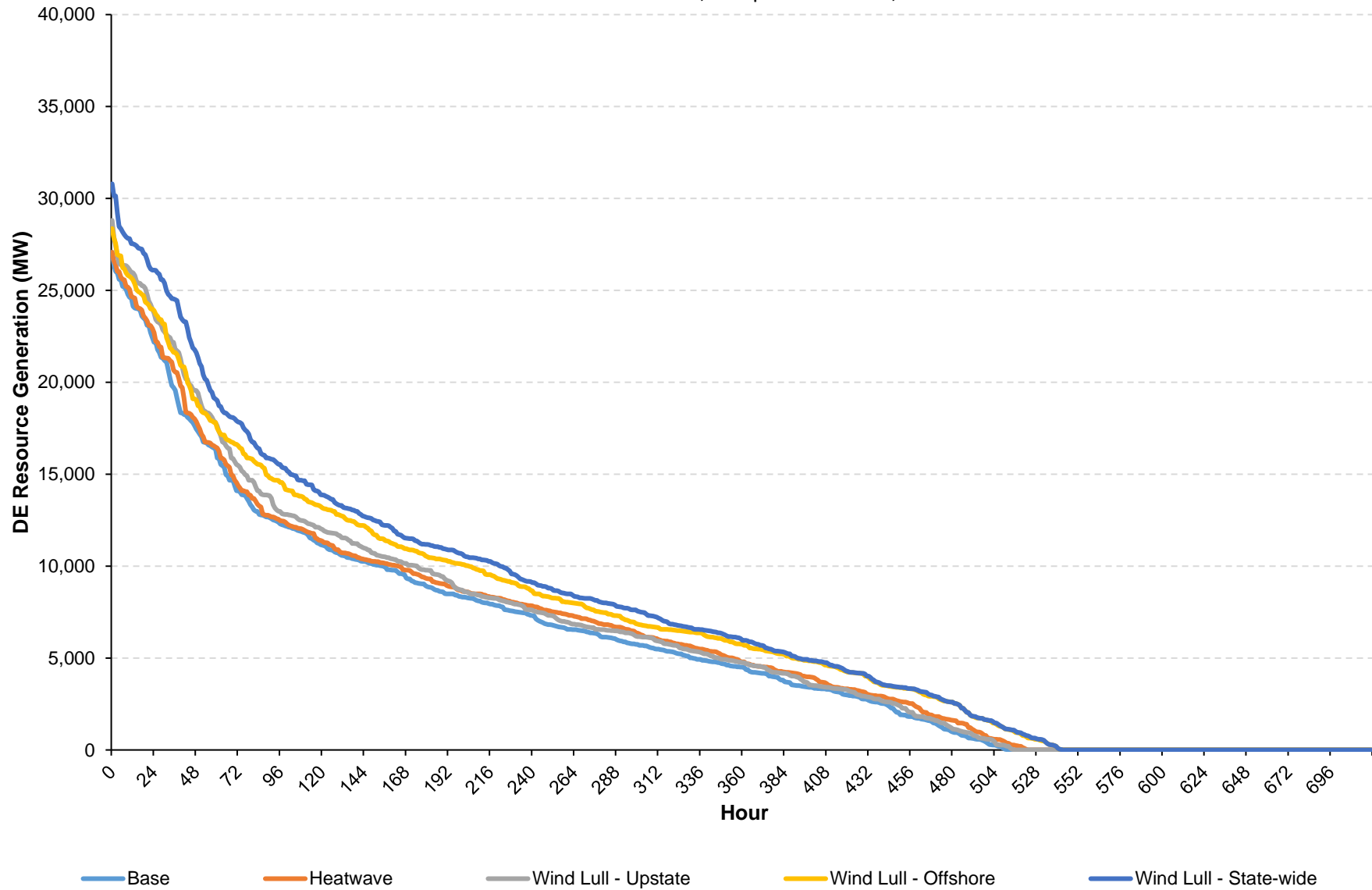
NYCA Loss of Load Occurrences (MW)

Reference Case - Winter - CCP2 Resource Set: All Scenarios



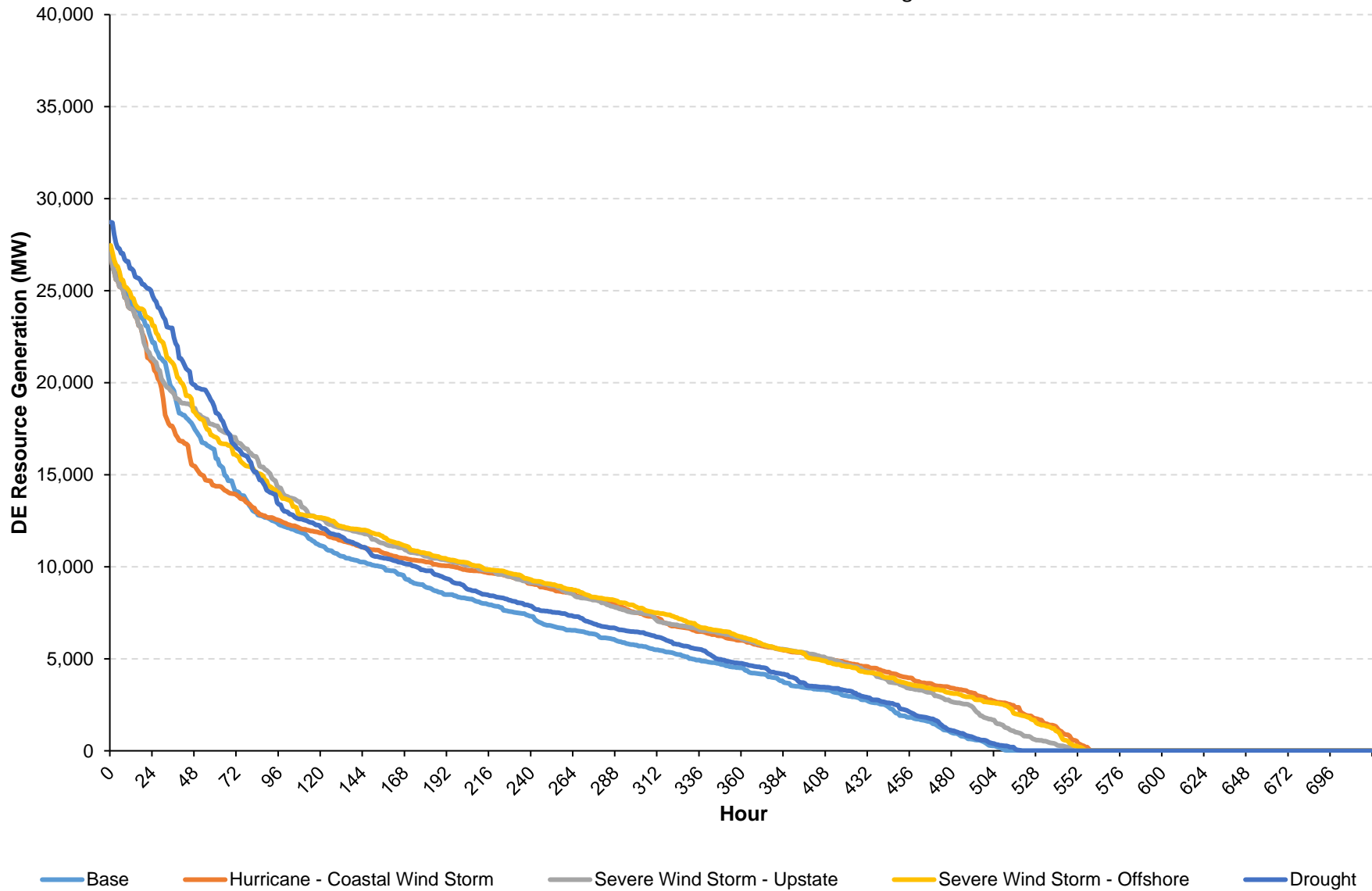
NYCA DE Resource Generation (MW)

CLCPA Case - Summer - GIT Resource Set: Base, Temperature Wave, and Wind Lull Scenarios



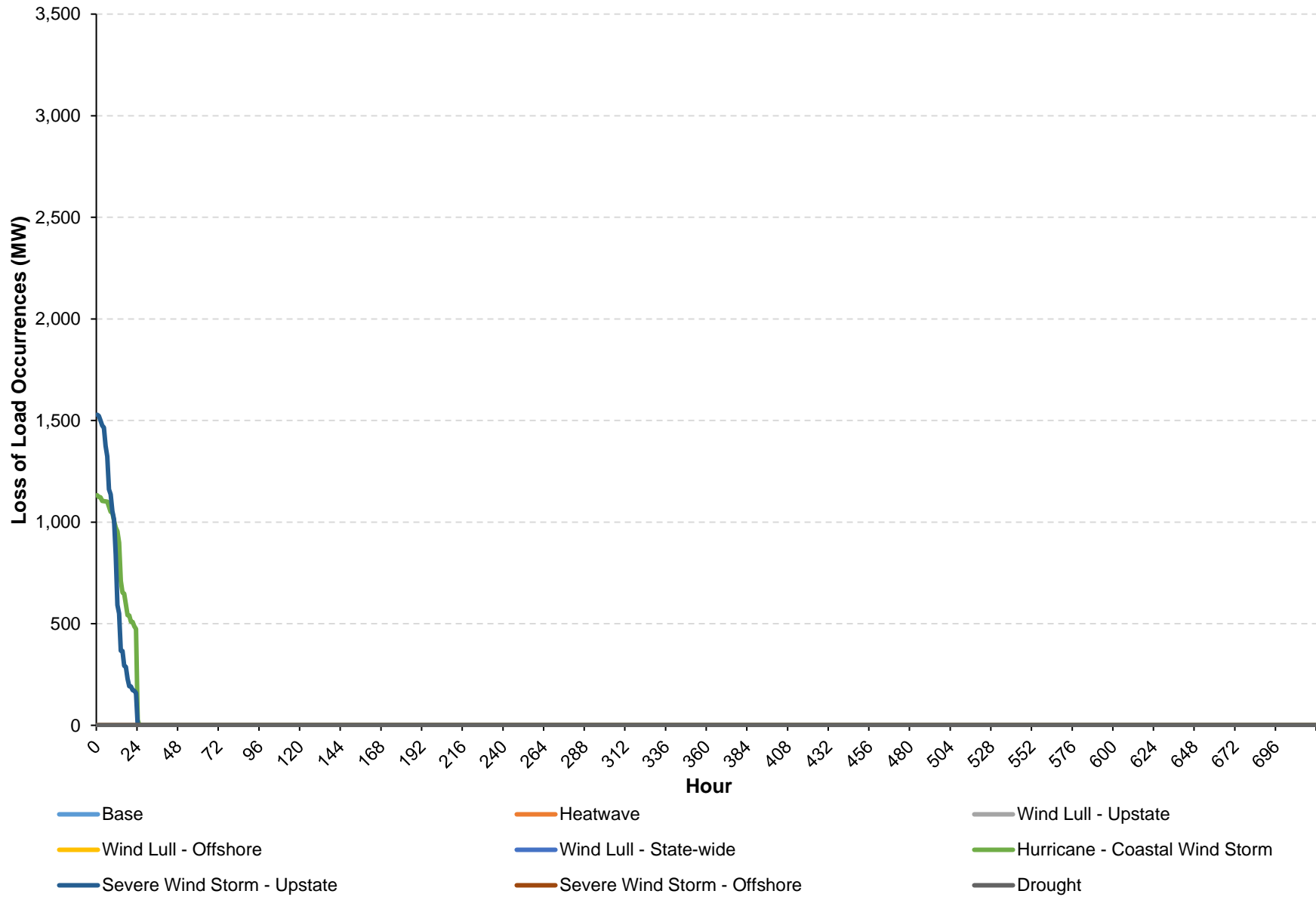
NYCA DE Resource Generation (MW)

CLCPA Case - Summer - GIT Resource Set: Storm and Drought Scenarios



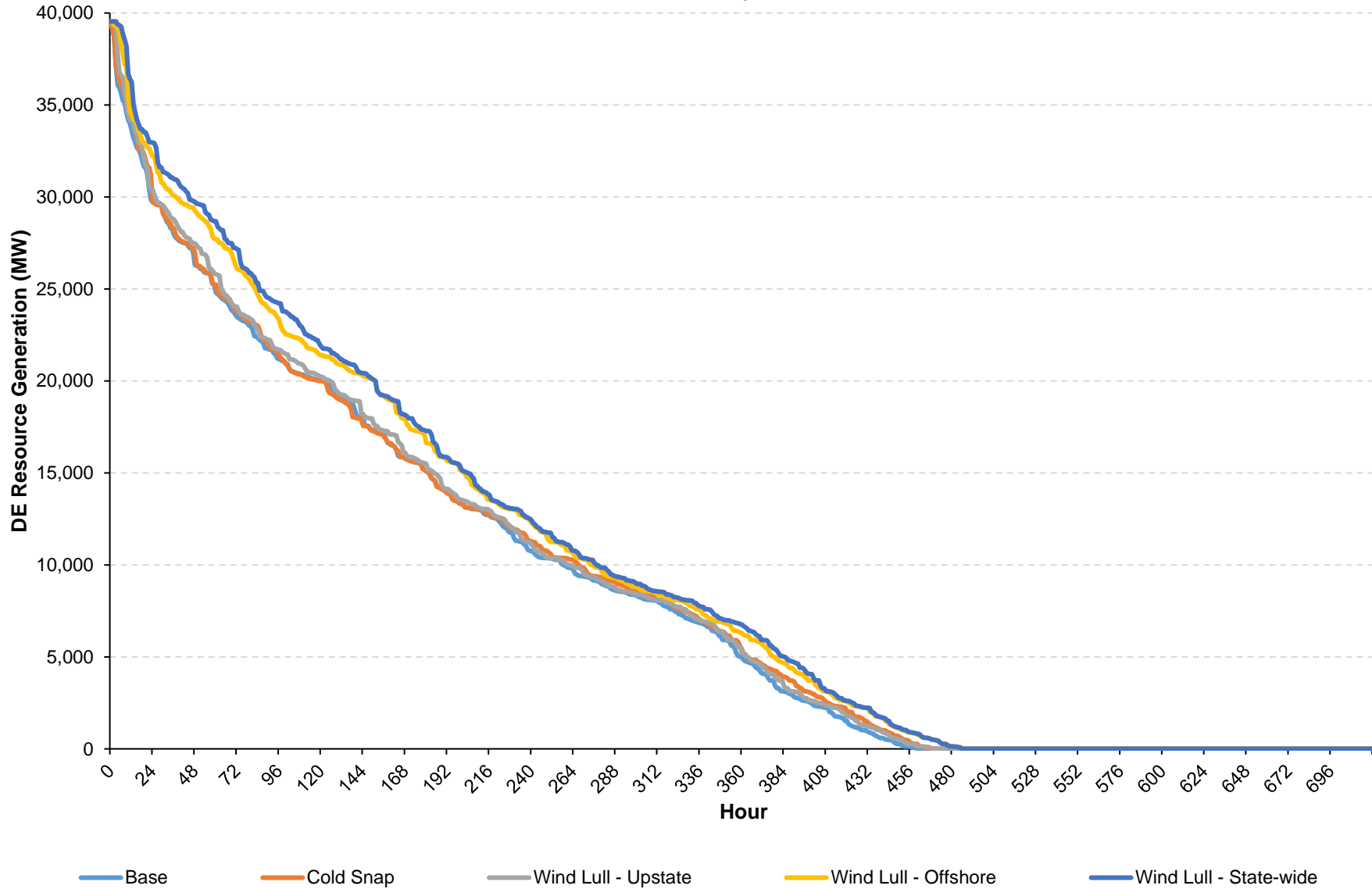
NYCA Loss of Load Occurrences (MW)

CLCPA Case - Summer - GIT Resource Set: All Scenarios



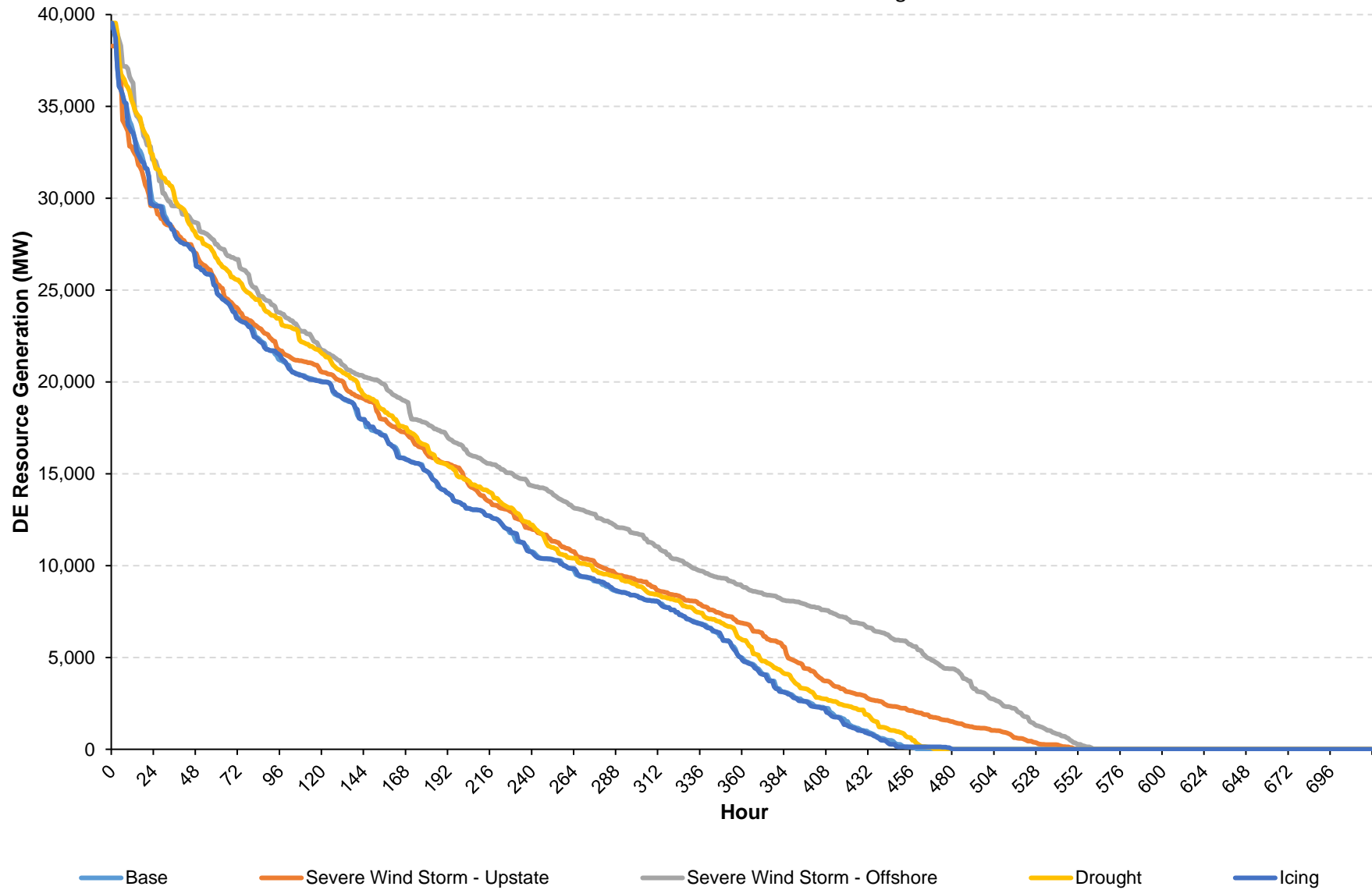
NYCA DE Resource Generation (MW)

CLCPA Case - Winter - GIT Resource Set: Base, Temperature Wave, and Wind Lull Scenarios



NYCA DE Resource Generation (MW)

CLCPA Case - Winter - GIT Resource Set: Storm and Drought Scenarios



NYCA Loss of Load Occurrences (MW)

CLCPA Case - Winter - GIT Resource Set: All Scenarios

